

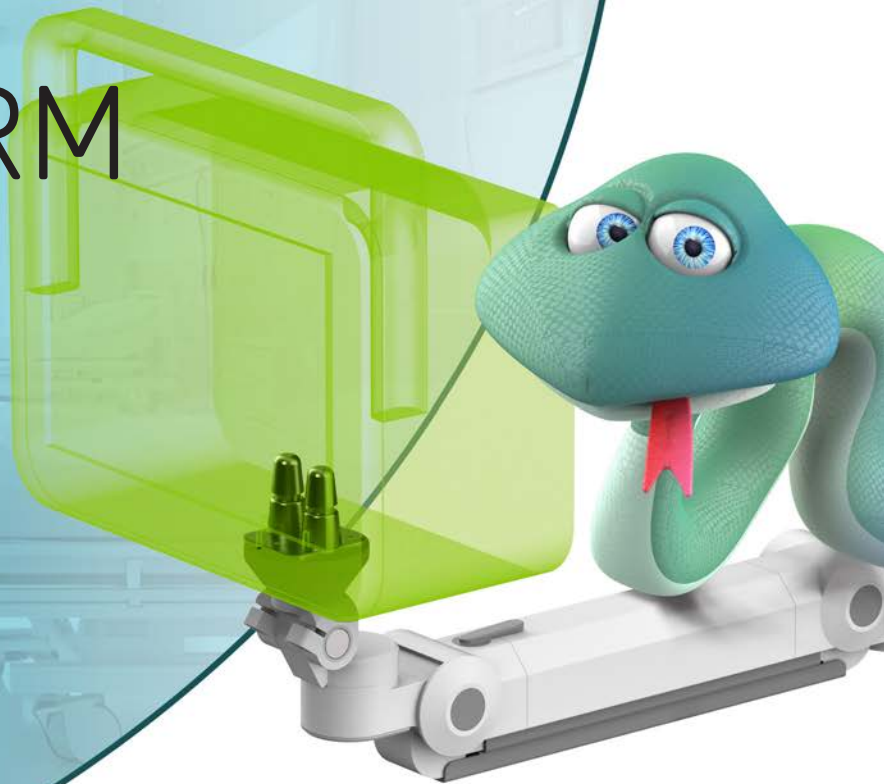
SNAKE ARM

SOLUTIONS

2025

SNA2

Medical Cart
COMPANY



GENERAL FEATURES



EASY TO CLEAN SURFACES

Clean surfaces without dirt traps.
One wipe cleaning.



2 YEARS WARRANTY

Two-years warranty for
the care-free treatment.

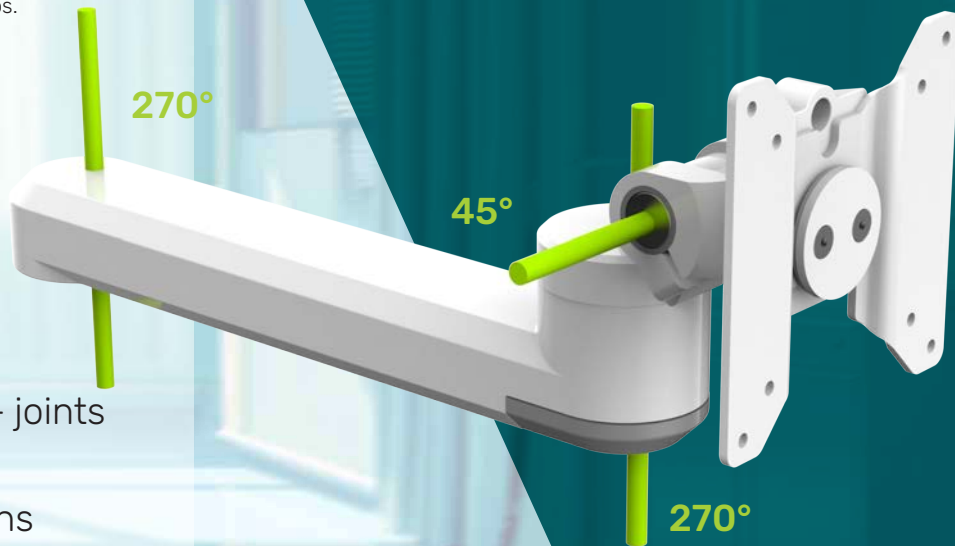


ERGONOMIC

Constant force joint that
enables a free setup

- Free movement with 3+ joints
- Cable management
- Several mounting options

Datasheet
Scan the QR



ARM CONFIGURATOR

Example:

SNA2-VWC-052-VM-H1

RANGE

- 1. BASE MOUNTING
- 2. MIDDLE SECTION
- 3. TOP MOUNTING
- 4. ACCESSORY

BASE MOUNTING
OPTIONS

MIDDLE SECTION
OPTIONS

ACCESSORY
OPTIONS

TOP MOUNTING
OPTIONS



BASE MOUNTING OPTIONS

The Snake2 arm family can be mounted on several medical parts: DIN rail fitting, Medical Cart Company's columns or Worktops.

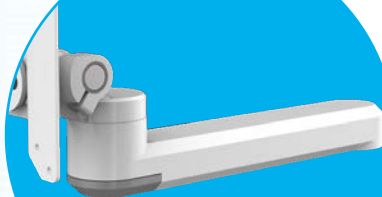


MIDDLE SECTION OPTIONS

The arm can be ordered with extensions including a height adjustable module.



00
No extension



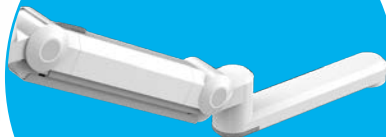
051
One extension



052
Two extensions



061
Gas spring arm



062
Gas spring arm with
one extension

TOP MOUNTING OPTIONS

We have several mounting solutions on the arm's end: displays and other medical devices can fit the Snake2 range.



* For custom mounting.

** Pins only available from Philips.

ACCESSORY OPTIONS

We offer handles and hooks for the Snake range for a better comfort.



H1
Handle



K1
Hook

Medical Cart C O M P A N Y



Medical Cart Company Kft.

2051 Hungary

Biatorbágy, Budai út 16.

Phone: +36 23 920 790

Email: info@medicalcartcompany.hu

www.medicalcartcompany.hu